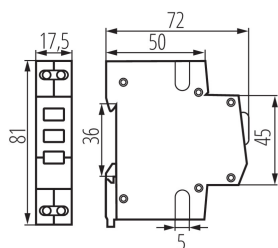


32895 KLI-3Y

TH35 rail-mounted voltage detector



GENERAL DATA:

Colour: white

Place of assembly: rail TH35

Length [mm]: 72

Width [mm]: 17.5

Height [mm]: 81

Number of fields: 1

TECHNICAL DATA:

Rated voltage [V]: 230 AC

Rated current [A]: 2.5

Rated frequency [Hz]: 50

Connection type: Terminal block

Range of sections of wires used [mm²]: max 2,5

Number of modules: 1

Power consumption [W]: 0.6

IP class: 20