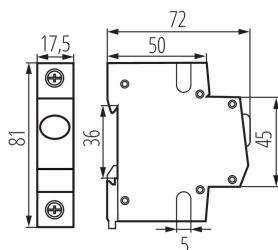


23321 KLI-G

TH35 rail-mounted voltage detector



LED light indicator is used to signal the status of electrical circuits.

GENERAL DATA:

Colour: white

Place of assembly: rail TH35

Number of fields: 1

TECHNICAL DATA:

Rated voltage [V]: 220-240 AC

Rated frequency [Hz]: 50/60

Number of modules: 1

IP class: 20