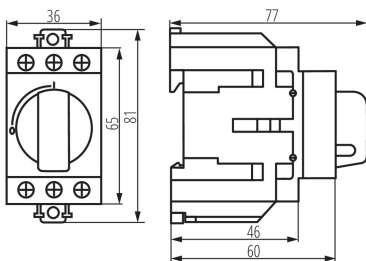


## 23238 KMI-R-3/40A

Modular switch disconnecter



### GENERAL DATA:

**Utilisation category:** AC-22A / AC-23A

**Place of application:** Indoors

**Norm:** PN-EN 60947-3

**Length [mm]:** 77

**Width [mm]:** 36

**Height [mm]:** 81

### TECHNICAL DATA:

**Rated voltage [V]:** 415 AC

**Rated current [A]:** 40

**Rated frequency [Hz]:** 50

**Connection type:** Terminal block

**Range of sections of wires used [mm<sup>2</sup>]:** 1-16

**Control type:** mechaniczne

**Number of modules:** 2

**IP class:** 20

**Rated insulation voltage  $U_i$  [V]:** 800

**Rated impulse withstand voltage  $U_{imp}$  [V]:** 6000

**Rated operational current  $I_e$  [A]:** 40 (AC-22A) / 40 (AC-23A)

**Number of poles:** 3

**Thermal current  $I_{th}$  [A]:** 40